

RENTAL FEATURES

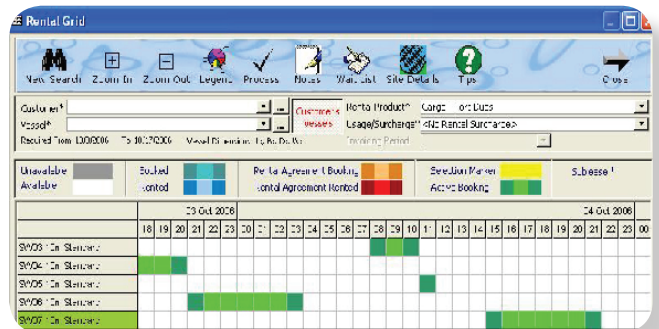
- Multiple Marinas or Rack Management
- Wet Berths, Rack Storage, Dry Sites, Moorings, Tenancies, etc
- 'Quick Finder' search feature for Customers, Vessels, Sites and Rental Agreements
- Customer, Vessel and Site Operation Views
- Rental Availability Grid of Sites Vacant
- Visual Views of Marinas, or Racks
- Time Based Booking Option
- Smart Invoicing

- Smart Notes for Operational Information
- Automated Invoice Batch Processing
- Sub Leasing and Rental Pooling Management
- Automatic Generation of Rental/Lease Berth Credits
- Comprehensive and Flexible Billing Options and Periods
- Utility and Other Service Charging
- 'Quick Query' for Mail Merges and User Reporting
- Wait and Action Lists
- Management Reporting and Analysis
- Training Mode Operation

The Rental Module is the core module of PacsoftMMS providing users the ability to enter and access information for customers, sites (berths/pens/slips/dry racks, moorings), and vessels quickly and accurately. Users can make bookings, process invoices and receipts, providing you with smart management and efficient control and accounting of site rentals.

Easy Reservations with the Rental Availability Grid

A picture is worth a thousand words - Making a reservation is quick and easy with the Rental module. Use the MMS Rental Availability Grid to identify available sites by specifying your search criteria (such as date and vessel length), choose a site from the search results, create the booking, invoice, and the receipting all in just a few simple clicks! The ability to quickly see which sites are available and for which periods of time can significantly reduce response time to customers and improve customer service levels.



Increase Productivity with Smart Invoicing

If a customer has decided to shorten, extend, or cancel a booking, PacsoftMMS 'Smart Invoicing' will invoice or credit to take care of the accounting side of the operational changes for you.

Other Service and Utility Charging

With PacsoftMMS you can efficiently record and process invoices and receipts for other charges and utilities such as live aboard, electrical power usage and water. Meter readings from utility meters can be entered and invoiced by batch or as one off transactions as you require. Automation features take care of ensuring all charges are invoiced. Full reporting is available to view recorded readings.

Sub-Lease/Rental Pool Management With PacsoftMMS Rental Credit Plans

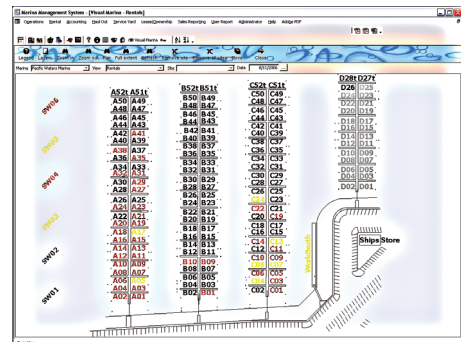
PacsoftMMS provides the ability to easily sub-lease sites to other customers. Staff can make sub-lease bookings and set up sub-lease agreements. PacsoftMMS can then automatically allocate appropriate portions of the sub-lease rental revenue to the marina and credit the original renter, saving staff valuable time in handling the processing of accounting of sub-leases and rental pools.

Automated Smart Batch Invoicing

Batch Processing eliminates the need for staff to manually process many typical daily tasks, saving your staff and business time and reducing employee overhead. Batch Processing will complete your Daily, Weekly, Monthly, Quarterly, Six Monthly and Annual Period Invoicing for you automatically, and will ensure nothing that should be invoiced gets missed.

Visual Marina Viewer with Colour Coded Views*

The Marina Viewer provides an alternative method of viewing and accessing information through a bird's eye view of the marina's sites, displaying the status of each site and providing navigation to drill into data and PacsoftMMS functions. The Marina Viewer provides various colour coded views to offer quick and easy identification of the status of each site within the view, eg rental, ownership, arrivals and departures.



Quick Query - Your Analysis & Mail Merge Tool

Access your business information quickly and easily with Quick Query. Offering flexible data filtering, Quick Query is a powerful customisable reporting tool. Managers have the flexibility to drill down through multiple reports for greater business analysis. You can create mail merges with this data and send targeted mailings to customers with special offers, send reminders to overdue accounts. You can also export the data to Excel or Access for further manipulation, analysis and reporting.

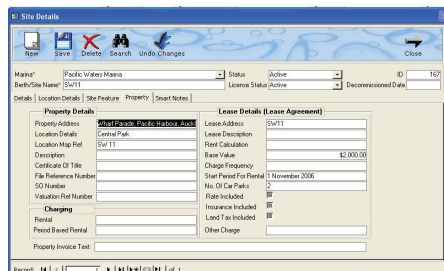
*Optional feature

Record Operational Information with Smart Notes

Within the day to day running of your marina business a wealth of operational information is generated on operations, customer communications, disputes, incidents, notes on rentals, vessels, overdue accounts follow-up, maintenance items for action, special actions, mailing lists. All of this information can all be recorded, analysed and actioned using PacsoftMMS Smart Notes.

Pier Check / Dock Walk - Arrival & Departures

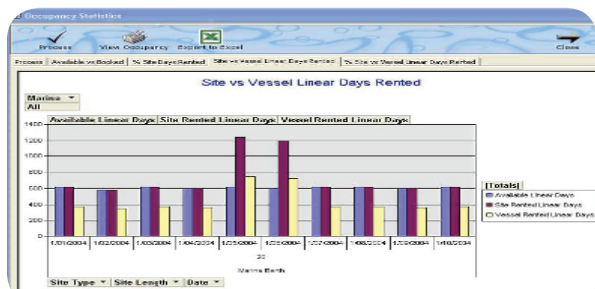
This feature reports the site status in the marina (i.e. who is situated where) and provides the facility to 'audit' the occupancy of each site on specific dates, with the ability to produce printed reports to use on the Dock Walk. Using the additional PocketMMS Module, the Dock Walk can also be completed on a handheld PocketPC and uploaded to the PacsoftMMS database.



Occupancy Statistics

PacsoftMMS provides the capability to flexibly analyse your marina occupancy levels, both historically and into the future, including 'efficiency' when charging on a vessel length basis.

Within each graph, users then have the ability to evaluate trends; view a tabular report; or export to Excel to manipulate the data and support management decision making and tariff setting.



Property Management

Lease management of the marina's property could not be easier with PacsoftMMS. You can charge tenants or occupiers of the property either on a recurring or ad-hoc basis; set up automated invoicing to tenants based on your specified frequency for rental, commercial garbage disposal, electricity, water, including any additional occupancy charges such as common area cleaning, and more.

You will always know your property tenants are charged correctly and on time, and any outstanding accounts are reported and managed just as efficiently as your marina site rentals.

Don't stop there! PacsoftMMS can also effectively manage the rental of Car Parking and Advertising spaces around the marina, as well as issue Car Parking Permits to your customers.

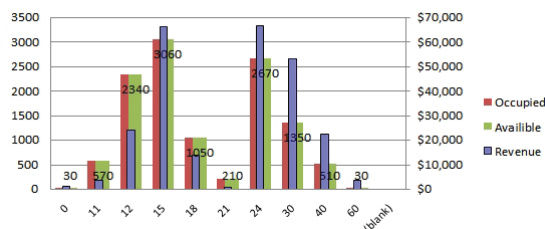
Wait and Action List

PacsoftMMS helps you to manage your wait listed customers on 'first come first serve' basis. The system maintains the list of people who wish to book a berth, car park or other products/services where the demand outstrips supply. The Action List can also be used to track items for action, e.g. track those customers who are due to submit their insurance policy.

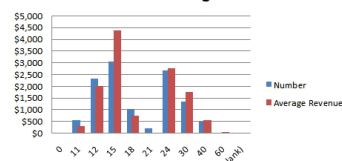
Management Reporting

Use PacsoftMMS to instantly access detailed rental reports across different areas of your rental operation, allowing you to easily review the performance of your business and analyse key information.

Berth Revenue & Occupancy



Average Revenue Per Metre By Berth Length



"We use the rental grid to quickly look at what's available, it's very quick and easy. I think the rental module is a fantastic product. Where it is very good for instance is when you book for 6 months and in 4 months you want to buy it, literally we can say you have stopped your booking today, push a button and it generates a credit note automatically! We can even take it one step further and refund it out through your credit card. So within arguably a 5 minute process we have stopped the booking, the berths back available and we've paid out the credit. From a business process point of view that's fantastic".

Keith Hogan, Marina Manager, Westhaven Marina, NZ

United Kingdom / Europe

Ocean Road

Phone: +44 (0) 845 003 4220

Email: mms@oceanroad.info

Website: www.mms.oceanroad.info

United States of America

Marina Management Services

Phone: +1 561 338 5800

Email: info@marinamanagement.com

Website: www.marinamanagement.com

Asia

Spinnaker International

Phone: +65 6875 1819

Email: mms@spinnaker.com.sg

Website: www.spinnaker.com.sg

New Zealand / Australia

Pacsoft International(Head Office)

Phone: +64 9 379 7260

Email: info@pacsoftmms.com

Website: www.pacsoftmms.com