

# OPTIONAL FEATURES

- Advanced MMS Menu Control
- Visual Marina Viewer with Colour Coded Views
- Time Based Booking
- Security Gate System Interface
- PacsoftMMS Point of Sale

- 3rd Party System and Food & Beverage Interfaces
- Shipping Chandlery Store or Retail Store System
- Membership Management
- Utility Meter Interfaces

In addition to the features offered by the various PacsoftMMS modules, the following optional features are available to meet your individual needs and add additional value to your marina business.

## Advanced MMS Menu Control

The Advanced Menu Control Module allows control over PacsoftMMS program functions and control over which staff members can access which functions. Access control can be broken down into customisable user groups with feature based permissions.

For multiple marinas being managed on MMS "Advanced Marina Access Control" allows you to specify what access Marinas have to the other Marinas data.

## Time Based Booking Module

New time based rental booking module allows you to book short term stays or equipment rental. Useful for booking events, or renting out boats or marina facilities for short periods.

## PacsoftMMS Point of Sale

Produce invoices, receipts, and credit notes as required for sale of products and services. For example:

- Fuel Sales
- Site Accessory Sales
- Shower and Laundry Tokens,
- Photocopying
- Phone Call Charges
- E-mailing and more.....

**Pacific Waters Marina**

Tax Registration Number: 10-148-858

TAX INVOICE

POS # PSL0312 MC 149 4/11/2006

You were served by Chris

Customer : Jonathan Abbott

Description	Units	Rate	Amount
Diesel	275	\$0.83	\$228.25
Total :			\$228.25
Includes TAX			\$20.75
Cash			-\$228.25
Total Payment :			\$0.00
Total Balance : \$0.00			

PLEASE KEEP THIS DOCKET AS PROOF OF PURCHASE

**Pacsoft MMS Point Of Sale**

Transaction Type \* [D] [OK] [Cancel] [F12]

Customer \* [1] [OK] [Cancel] [F12]

Auto Payment Method [None] [OK] [Cancel] [F12]

Address [1] [OK] [Cancel] [F12]

Phone [523-0969] [OK] [Cancel] [F12]

Pin [91123344] [OK] [Cancel] [F12]

Transaction Date \* [4/11/2006] [OK] [Cancel] [F12]

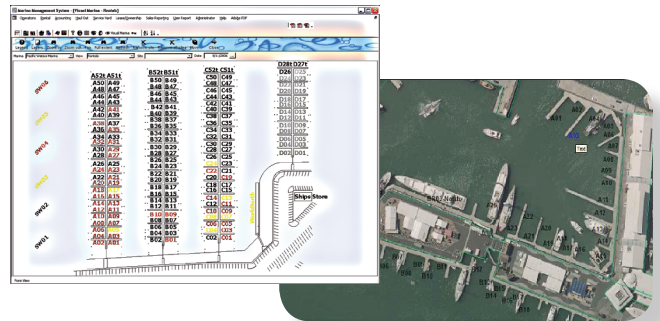
**pacsoftPOS**

Description	Quantity	Unit Price	Total Price	Tax	Discount	Net Price
Diesel Fuel	275	\$0.83	\$228.25	\$20.75		\$207.50
Shower Tokens	10	\$1.50	\$15.00			\$15.00
Cargo - Garage Deposit	1	\$15.00	\$15.00			\$15.00
Security - Security Area	1	\$15.00	\$15.00			\$15.00
Per Charge	1	\$15.00	\$15.00			\$15.00
Total			\$288.25	\$35.75		\$252.50

Account [1] [OK] [Cancel] [F12]

Balance [1] [OK] [Cancel] [F12]

Total [1] [OK] [Cancel] [F12]



## Visual Marina Viewer with Colour Coded Views

The Marina Viewer provides an alternative method of viewing and accessing information through a bird's eye view of the marina's sites, displaying the status of each site and providing navigation to drill into data and PacsoftMMS functions. The Marina Viewer provides various colour coded views to offer quick and easy identification of the status of each site within the view, eg rental, ownership, arrivals and departures.

## Shipping Chandlery Store or Retail Shop Management System

If your marina business demands a sophisticated point of sale system, PacsoftMMS retail management functionality is provided by the Microsoft Retail Management System (RMS). Fully integrated with PacsoftMMS, this powerful retail software package helps you manage a wide range of retail operations and customer marketing tasks.

## Security Gate System Interface

PacsoftMMS has the ability to integrate with a number of popular security systems that control access to gates, car park barrier arms, shower and toilet blocks, etc.

Visitors to the marina are allocated a pin number or a physical card that will allow them access to various security points in the marina. The PacsoftMMS interface will issue a pin (or card number) for the security system, saving the marina operators from having to enter data twice into two separate systems. Charges related to the issue of cards or keys can be easily created and managed as required by PacsoftMMS. Individual systems may require customisation.

### 3rd Party System and Food & Beverage Interfaces

PacsoftMMS has the ability to integrate with food and beverage systems. Individual systems may require customisation.

### Utility Meter Interfaces

PacsoftMMS has the ability to integrate with Utility systems e.g. Electrical and Water. Read meters from your desktop. Individual systems may require customisation.

### Membership Management

The Membership Module allows marinas with clubs and Yacht Clubs to record and manage memberships. Fully integrated within PacsoftMMS the Membership Module provides the ability to record a range of membership information and activity, together with the management of related charges or subscriptions.

## Pacsoft International provides integrated Yacht Club Membership & Marina Management system for the Royal Prince Alfred Yacht Club

After extensive research for a suitable club and marina management system, the Royal Prince Alfred Yacht Club (RPAYC) in Sydney, home to the largest marina in New South Wales, is pleased to announce a strategic partnership with Pacsoft International.

Pacsoft MMS will provide an integrated yacht club membership and marina management system for the club's 1800 members, providing interface with their food and beverage point of sale system and access control system to deliver a seamless experience to their members. In addition, the system will manage other key marina operations including rental booking, reservation, invoicing, haul out and service yard management and general ledger interface to the Microsoft Great Plains accounting package.

"The Pacsoft MMS system will streamline the club's business processes, improve member services and improve the efficiency of the club," said general manager of RPAYC John Dorling.

The Royal Prince Alfred Yacht Club is situated at Green Point on the pristine body of water called Pittwater on Sydney's Northern beaches. The club has a long and colourful history dating from 1867. Locals and members now refer to their club as 'the Alfred's' and enjoy the benefits of being members of one of Australia's most successful and prestigious yacht club.

Managing director for Pacsoft MMS Chris Thomas said the system will also improve as the relationship grows and it becomes more and more in touch with the club's needs.

"Future upgrades and integration to the Internet can only improve the system and in turn improve the service to their members," he said.



#### United Kingdom / Europe

##### Ocean Road

Phone: +44 (0) 845 003 4220

Email: [mms@oceanroad.info](mailto:mms@oceanroad.info)

Website: [www.mms.oceanroad.info](http://www.mms.oceanroad.info)

#### United States of America

##### Marina Management Services

Phone: +1 561 338 5800

Email: [info@marinamanagement.com](mailto:info@marinamanagement.com)

Website: [www.marinamanagement.com](http://www.marinamanagement.com)

#### Asia

##### Spinnaker International

Phone: +65 6875 1819

Email: [mms@spinnaker.com.sg](mailto:mms@spinnaker.com.sg)

Website: [www.spinnaker.com.sg](http://www.spinnaker.com.sg)

#### New Zealand / Australia

##### Pacsoft International(Head Office)

Phone: +64 9 379 7260

Email: [info@pacsoftmms.com](mailto:info@pacsoftmms.com)

Website: [www.pacsoftmms.com](http://www.pacsoftmms.com)