

HAUL OUT FEATURES

- Boat Lifting and Storage Management
- Visual Booking Grid for Lifts & Equipment
- Lift & Return, One Way, Open Lifts, Lift & Hold
- Print the Haul Out Contract & Other Documents
- Flexible and Comprehensive Charging Methods
- Quotation Features
- Daily Device Activity Sheet
- Utility and Other Services Charging
- Easy to use and comprehensive reporting
- 'Quick Query' for Mail Merges or User Reporting
- Wait and Action List
- Management Reporting and Analysis

The Haul Out Travel Lift module is suitable where vessel haul out, storage and other services are provided. It allows users to quickly make bookings, generate invoices and reports for Haul Out services (travel lifts, Haul Out slipways, mast cranes, cradles and more) and hardstand storage charges. Cradles can also be booked and charged for as required. This module also handles associated miscellaneous charges of additional services and products such as water blast cleaning, extra straps, labour time, anodes, etc. The Management of shore side storage of vessels is of course provided for by the PacsoftMMS Haul Out Module.

Haul Out & Cradle booking Visual Availability Grid

The Haul Out & Cradle Availability Grid enables users to search for available timeslots on the travelift or slipway just as a rental booking in the Rental module. It supports the use of different types of Haul Out methods such as travel lift, forklift, crane and slipways.

Users can set up business operating hours and specify public holidays to help plan your marina Haul Out activities.

Daily Activity Worksheet

Create notes that will appear on specified days on the Haul Out Activity Report so that Haul Out Operators can view instructions or notes relating to that day.

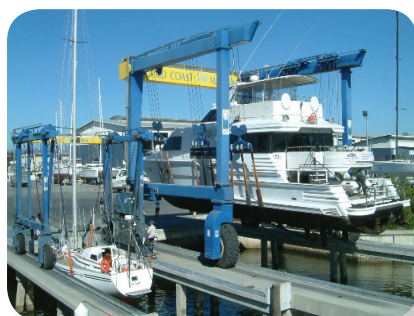
- Create follow up lists for bookings with open return dates
- Generate Haul Out Activity reports
- Provide all the information the yard crew need for the days' work".

Haul Out Charging

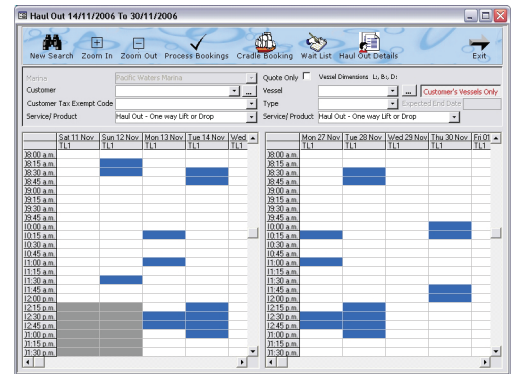
Specify how your Haul Out facility charges whether it be by lift, based on vessel dimensions, days, time etc. Invoice for products and services such as wash time, fitting, sales of anodes, labour charges, paint sales, fuel, power, anti-foul charges, hire of frames, ladders, and more. Price the Lift and Chock separately from the launch. PacsoftMMS provides you the flexibility to charge how you wish to charge, and opens opportunities for new ways of charging for your Haul Out and Storage Services.

Haul Out Quotation

Users have the ability to produce Haul Out quotations for customers. Once accepted by the customer the quotation can be turned into a booking and invoiced as required without the need to re-enter any information.



"Haul Out shown at Gold Coast City Marina, Australia - supported and administered by the PacsoftMMS Haul Out Module."



Search for an existing booking

You can search for one-way or two-way lifts and by date range. Easily find existing bookings by Customer, Vessel, or Date and alter, or cancel bookings as customer's requirements change. Quotations issued to customers can be easily searched for and turned into a booking as required without the need to re-enter any information.

Haul Out Reports

The Haul Out module provides a range of reports to facilitate efficient management of your Haul Out/Travel Lift operations. e.g. Activity reports, Work In Progress, Sales Analysis, Vessel on Hardstand, and follow up lists to chase for open ended bookings.

Quick Query - Your Analysis & Mail Merge Tool

Access your business information quickly and easily with Quick Query. Offering flexible data filtering, Quick Query is a powerful customisable reporting tool. Managers have the flexibility to drill down through multiple reports for greater business analysis.

You can create mail merges with this data and send targeted mailings to customers with special offers, reminders about repeat work e.g. re antifouling, send reminders to overdue accounts. You can also export the data to Excel or Access for further manipulation, analysis and reporting.

SERVICE YARD FEATURES

- Service, Repair and Refit Work
- Quote for Jobs
- Lifts, Storage, Labour, Inventory Items
- Create and Track Purchase Items (Indent Orders)
- Track Work in Progress
- Full Job Costing Reporting
- Maintain History of Work on a Vessel
- Easy access to reporting

The Service Yard Module is an 'add-on' to the Haul Out Module. Yards that employ boat builders, re-fitters, painters, mechanics, etc will benefit as jobs are easily recorded, costed, quoted and tracked, so no task ever gets lost. Your staff can respond quickly to customer enquiries with efficient and personalised service that can turn a one-off job into lasting and profitable customer relationships. Reduce the management and accounting overhead of managing service jobs.

With this module users can:

- Quote on Vessel repair and servicing jobs including the Haul Out and storage charges
- Create purchase orders and purchases for the job
- Track costs associated with work in progress
- Monitor and control stock levels and movement
- Add and manage mark-up to stock items.
- Produce full job costing reports, which include labour hours, stock usage and purchases.
- Record employee timesheets to add Labour Costs
- Fixed Price or Time Spent Charging



The Service Yard Module saves you time and money by integrating with other PacsoftMMS modules, allowing you to manage your service yard facility with one fully integrated system!



"Our Service Yard Manager loves the Haul Out module. Much of what was previously only capable of being performed by top management is now handled by the Service Manager and his team".

Brett McMullen, Marina Manager, Fergusons Boatshed Marina, Australia

United Kingdom / Europe
Ocean Road
Phone: +44 (0) 845 003 4220
Email: mms@oceanroad.info
Website: www.mms.oceanroad.info

United States of America
Marina Management Services
Phone: +1 561 338 5800
Email: info@marinamanagement.com
Website: www.marinamanagement.com

Asia
Spinnaker International
Phone: +65 6875 1819
Email: mms@spinnaker.com.sg
Website: www.spinnaker.com.sg

New Zealand / Australia
Pacsoft International(Head Office)
Phone: +64 9 379 7260
Email: info@pacsoftmms.com
Website: www.pacsoftmms.com